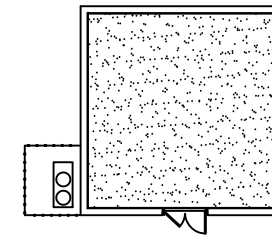


Basement Floor



DISCLAIMER:
 WAYNE STATE UNIVERSITY, FACILITIES PLANNING AND MANAGEMENT MAKES THESE DOCUMENTS AVAILABLE ON AN "AS IS" BASIS. THESE DRAWINGS WERE CREATED USING AUTOCAD FROM AUTODESK AND ARE ACCURATE FOR SPACE MANAGEMENT, 'FLOOR PLAN' USE. THE USERS WILL HOLD HARMLESS WSU, ITS OFFICERS, AGENTS, AND EMPLOYEES FROM DAMAGES OR COST, INCLUDING REASONABLE ATTORNEY'S FEES, ARISING FROM THE USE OF THESE DRAWINGS.



First Floor

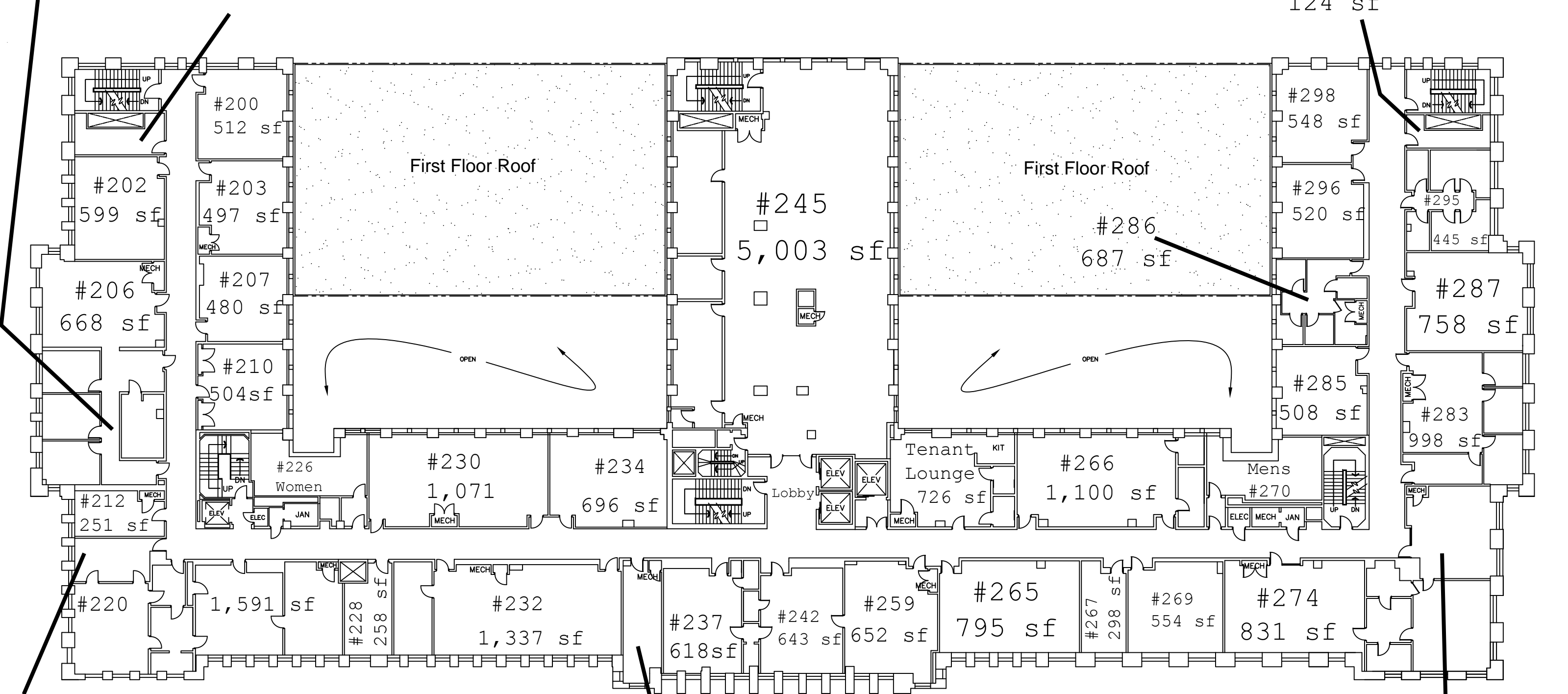


DISCLAIMER:
WAYNE STATE UNIVERSITY, FACILITIES PLANNING AND MANAGEMENT
MAKES THESE DOCUMENTS AVAILABLE ON AN "AS IS" BASIS. THESE
DRAWINGS WERE CREATED USING AUTOCAD FROM AUTODESK AND ARE
ACCURATE FOR SPACE MANAGEMENT, 'FLOOR PLAN' USE. THE USERS
WILL HOLD HARMLESS WSU, ITS OFFICERS, AGENTS, AND EMPLOYEES
FROM DAMAGES OR COST, INCLUDING REASONABLE ATTORNEY'S FEES,
ARISING FROM THE USE OF THESE DRAWINGS.

#208
1,058 sf

#201
187 sf

#297
124 sf



#214
231 sf

#235
289 sf

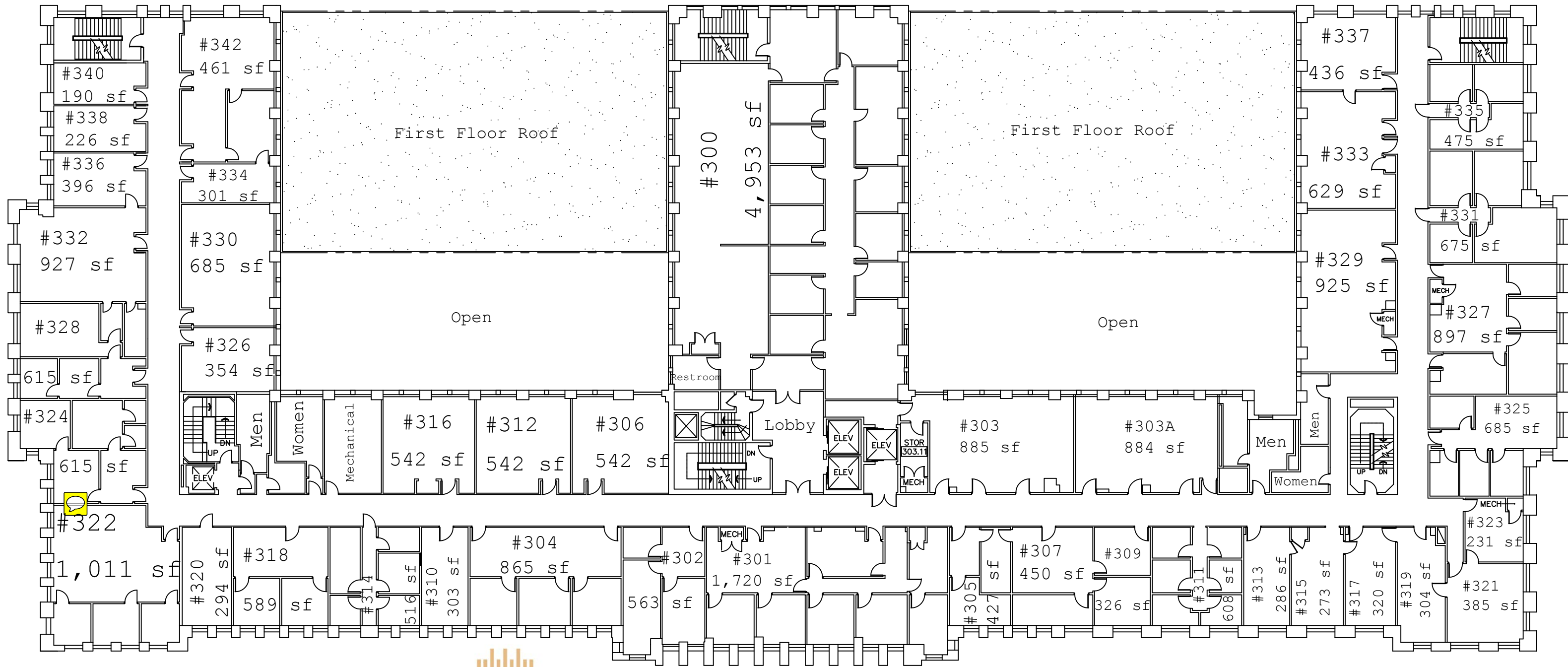
#280
1,246 sf



Second Floor



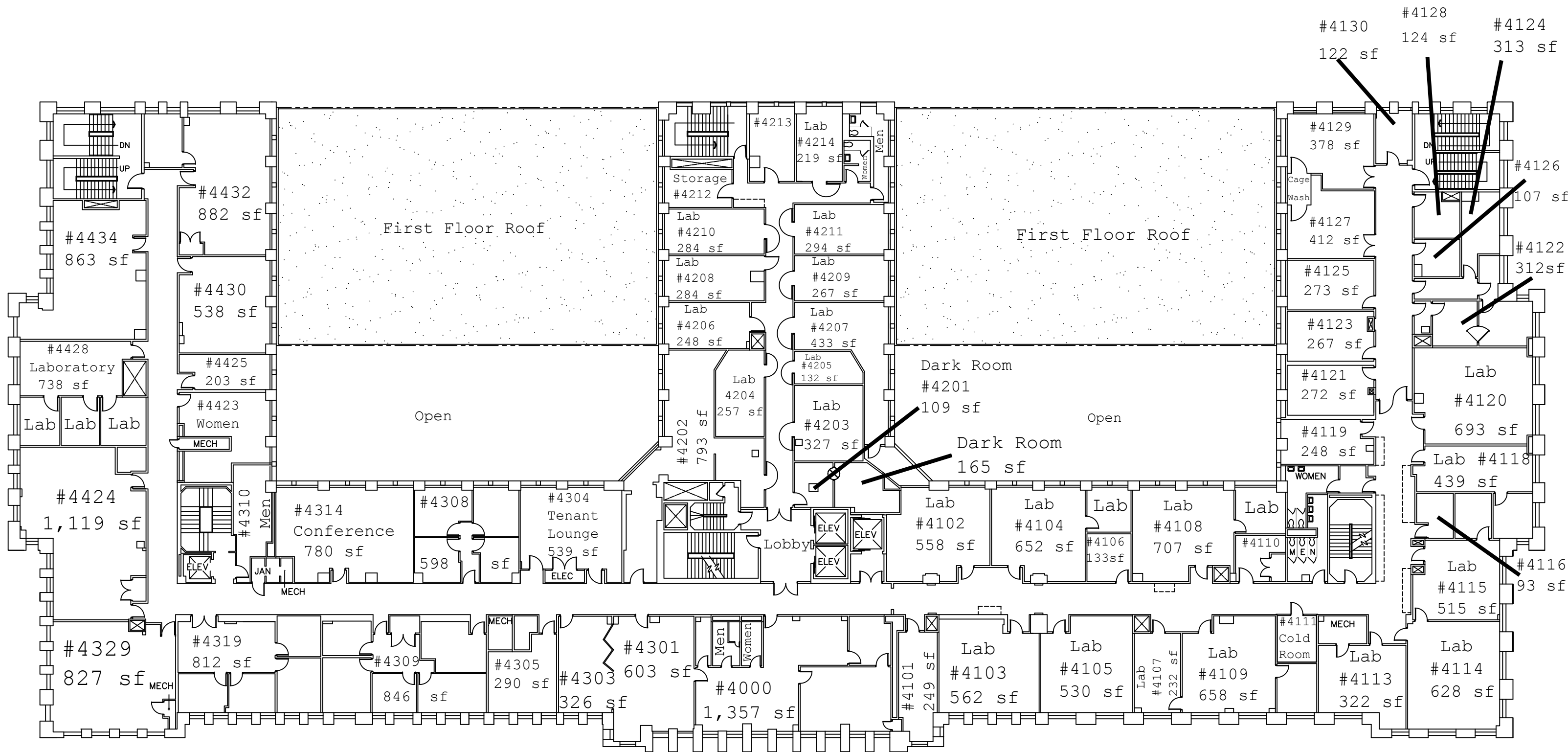
DISCLAIMER:
WAYNE STATE UNIVERSITY, FACILITIES PLANNING AND MANAGEMENT MAKES THESE DOCUMENTS AVAILABLE ON AN "AS IS" BASIS. THESE DRAWINGS WERE CREATED USING AUTOCAD FROM AUTODESK AND ARE ACCURATE FOR SPACE MANAGEMENT, 'FLOOR PLAN' USE. THE USERS WILL HOLD HARMLESS WSU, ITS OFFICERS, AGENTS, AND EMPLOYEES FROM DAMAGES OR COST, INCLUDING REASONABLE ATTORNEY'S FEES, ARISING FROM THE USE OF THESE DRAWINGS.



Third Floor



DISCLAIMER:
 WAYNE STATE UNIVERSITY, FACILITIES PLANNING AND MANAGEMENT MAKES THESE DOCUMENTS AVAILABLE ON AN "AS IS" BASIS. THESE DRAWINGS WERE CREATED USING AUTOCAD FROM AUTODESK AND ARE ACCURATE FOR SPACE MANAGEMENT, 'FLOOR PLAN' USE. THE USERS WILL HOLD HARMLESS WSU, ITS OFFICERS, AGENTS, AND EMPLOYEES FROM DAMAGES OR COST, INCLUDING REASONABLE ATTORNEY'S FEES, ARISING FROM THE USE OF THESE DRAWINGS.



DISCLAIMER:
 WAYNE STATE UNIVERSITY, FACILITIES PLANNING AND MANAGEMENT MAKES THESE DOCUMENTS AVAILABLE ON AN "AS IS" BASIS. THESE DRAWINGS WERE CREATED USING AUTOCAD FROM AUTODESK AND ARE ACCURATE FOR SPACE MANAGEMENT, 'FLOOR PLAN' USE. THE USERS WILL HOLD HARMLESS WSU, ITS OFFICERS, AGENTS, AND EMPLOYEES FROM DAMAGES OR COST, INCLUDING REASONABLE ATTORNEY'S FEES, ARISING FROM THE USE OF THESE DRAWINGS.

Fourth Floor